

Analize microscopice efectuate la nivelul stratului litic

Castrul roman Jidova

Analizele microscopice au fost efectuate la nivelul fiecărei culori aplicate atât parțial cât și la nivelul tavanelor care prezentau strat pictural.

S- a utilizat un videomicroscop portabil digital DinoLite 1.3 megapixeli putere de marire 90x.

Informatii tehnice

M	WD	FOV (x)	FOV (y)
20	151.0	19.6	15.6
30	101.0	13.0	10.4
40	77.2	9.8	7.8
50	64.1	7.8	6.3
60	56.2	6.5	5.2
70	51.3	5.6	4.5
80	48.3	4.9	3.9
90	46.6	4.3	3.5

M = rata de mărire

WD = distanta de lucru
FOV = campul
DOF=adâncimea câmpului
Unit = mm

Model AM4113ZTL Dino-Lite Premier

Interface USB 2.0

Rezolutia 1.3M pixels (SXGA)

Gradul de mărire 20x~90x

Sensor Color CMOS

Cadre Pana la 30fps

Modalitati de salvare Imagine :

a imaginilor DinoCapture2.0: BMP, GIF, PNG, MNG, TIF, TGA, PCX, WBMP, JP2,

JPC, JPG, PGX, RAS, PNM
DinoXcope: PNG, JPEG

Filmare :

DinoCapture2.0: WMV, FLV, SWF
DinoXcope: MOV

Microtouch Touch sensitive trigger on the microscope for taking pictures

Iluminarea 8 white LED lights switched on/off by software

Polarizare da

Funcție de măsurare da

Funcție de calibrare da

System de operare Windows XP/7/8/10/11
macOS 10.14 or later

Greutate 105g

Dimensiune 10.5cm (H) x 3.2cm (D)

Probe mortar rosturi



P1



P2

Substrat litic cu evidențierea unui atac biologic



P3



P4

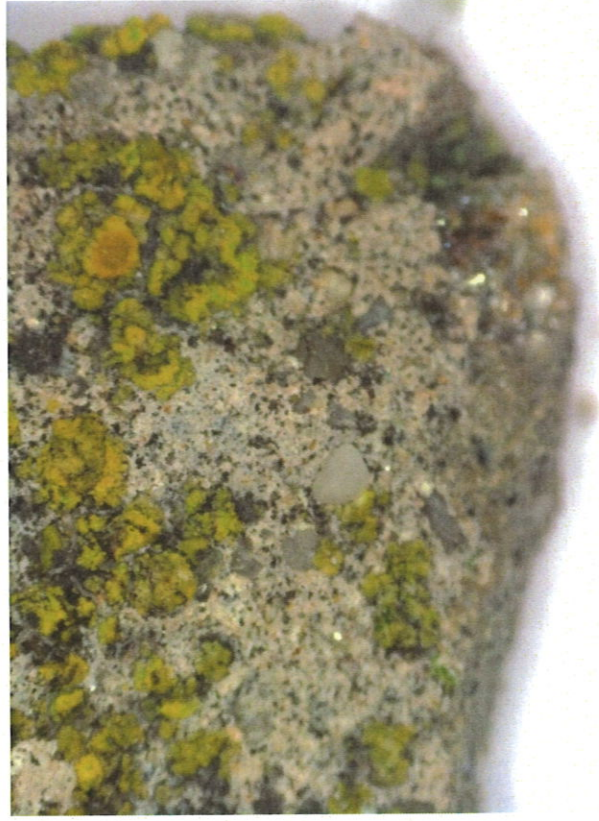


P5

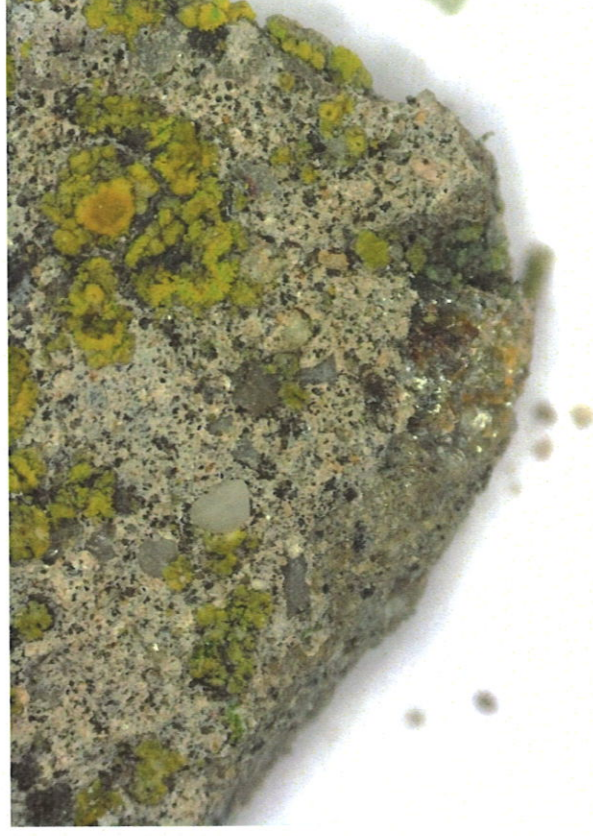


P6

Substrat litic cu evidențierea unui amplu atac biologic pe toata suprafața

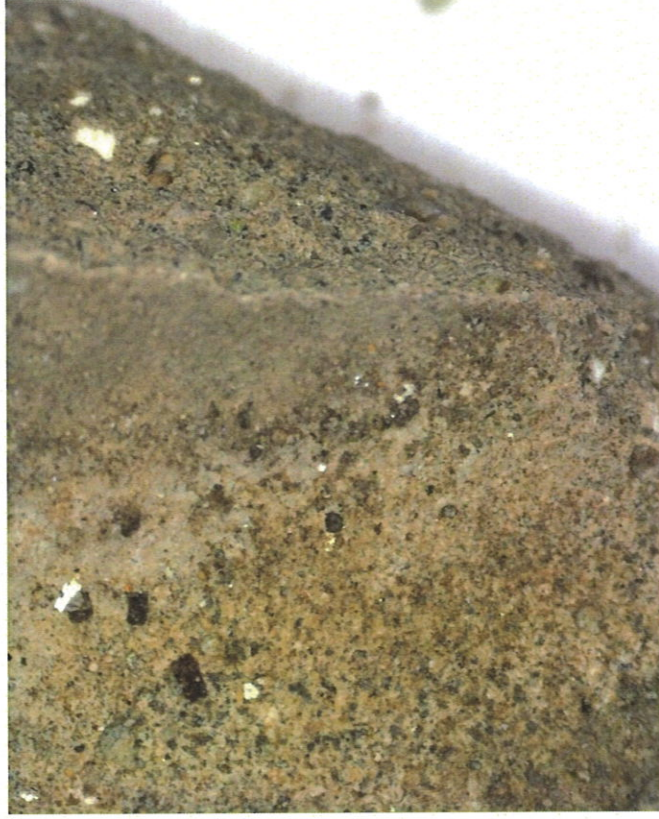


P7



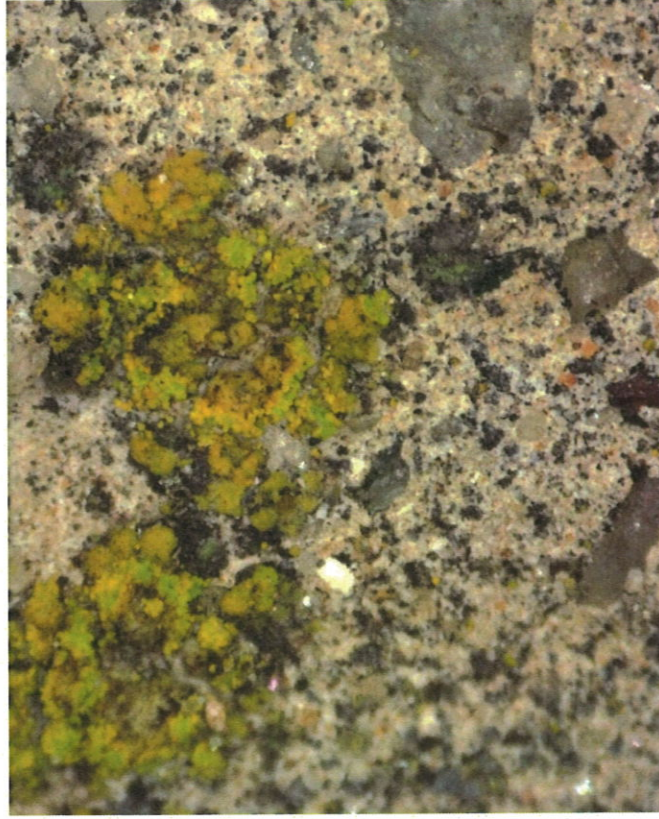
P8

Proba ciment provenit din interventie ulterioara

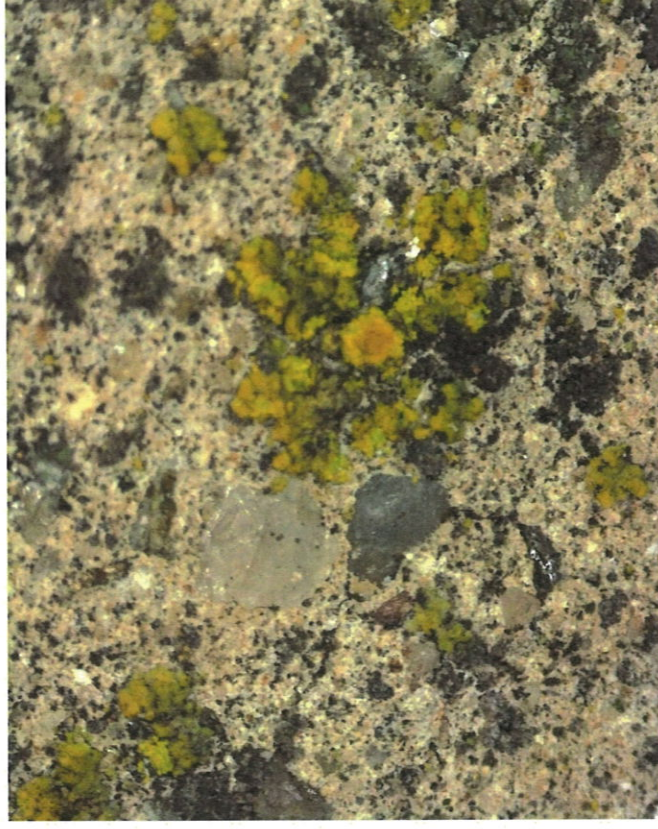


P9

Proba substrat litic biodegradat



P10



P11

Proba comparativ mortar vechi/ ciment provenit din interventii ulterioare



P12



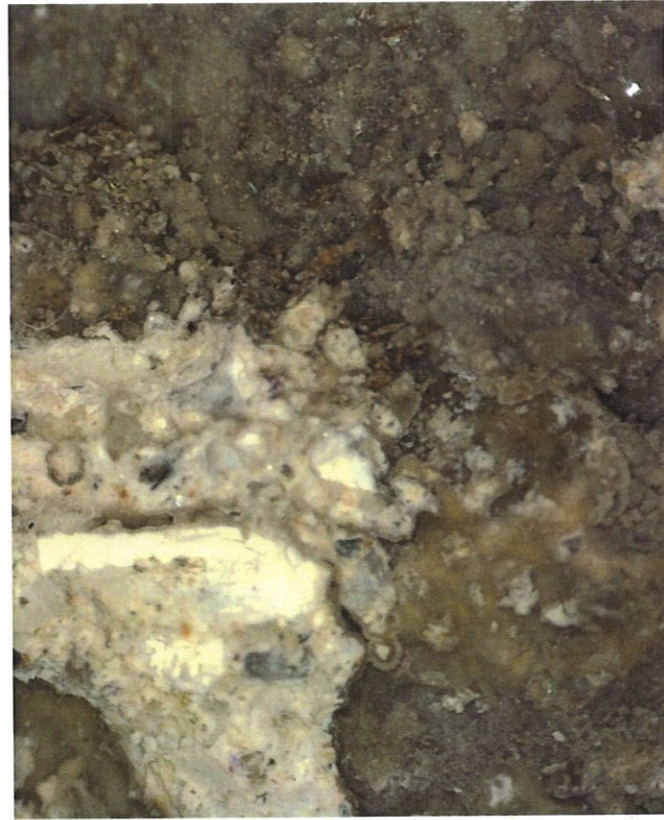
P13



P14



P15

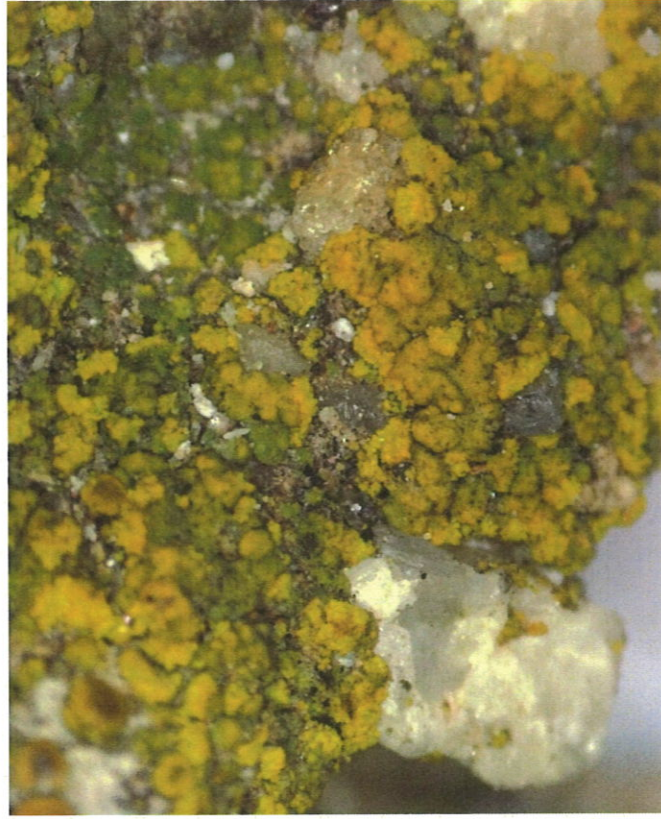


P16



P17

Substrat litic cu evidențierea unui amplu atac biologic pe toata suprafața



P18



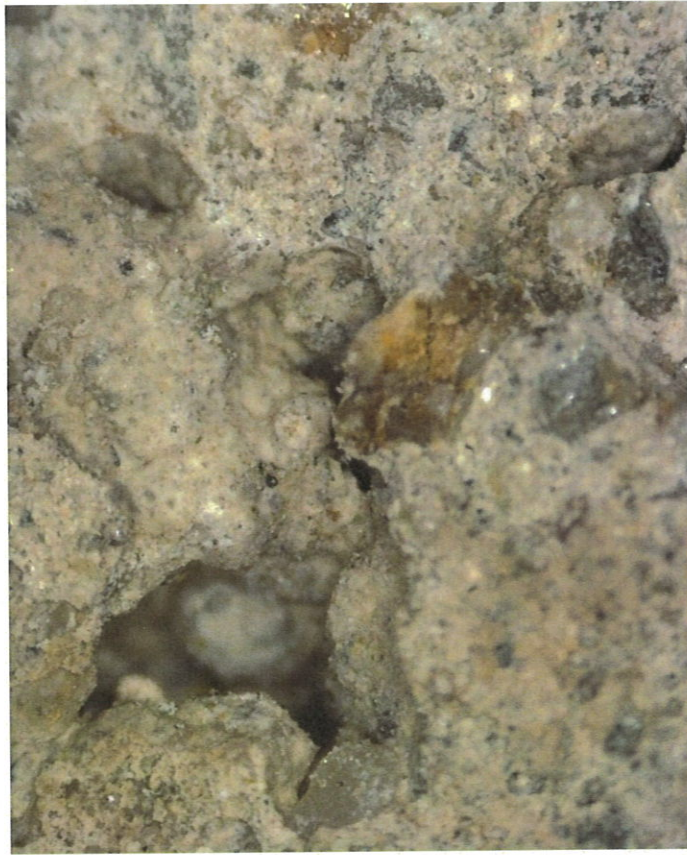
P19

Proba substrat litic



P20

Proba mortar de rost vechi

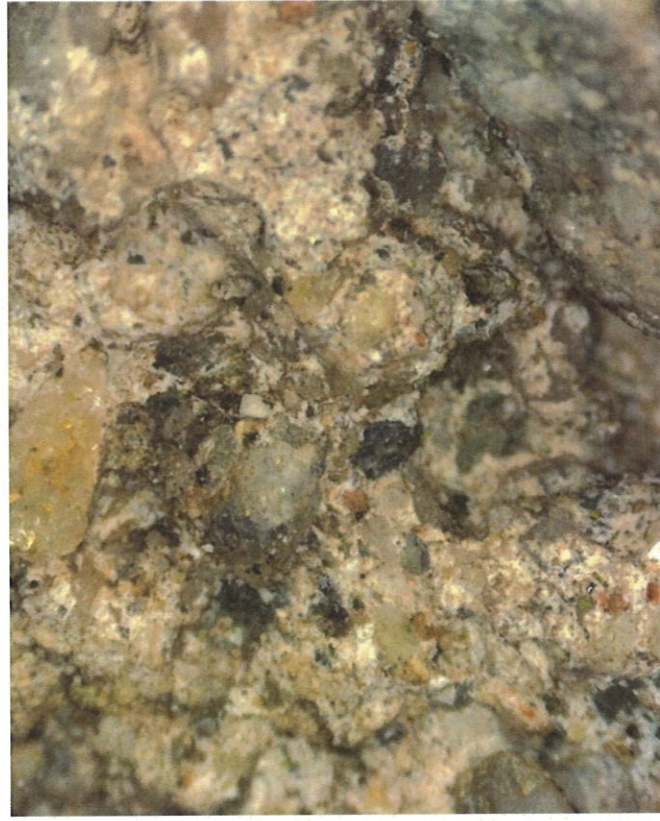


P21



P22

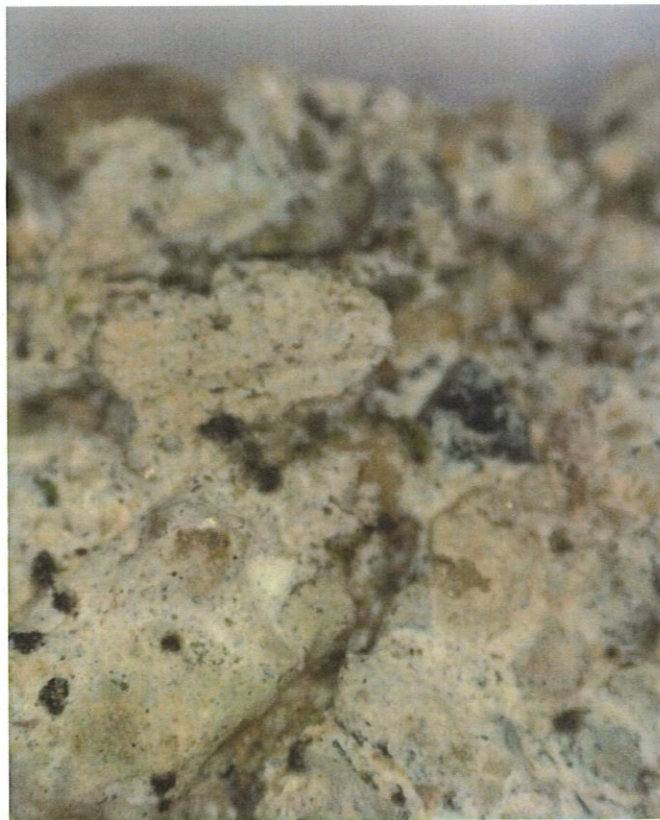
Proba mortar de rost vechi si substrat litic



P23



P24



P25

Proba mortar de rost vechi evidentiare atac biologic



P26

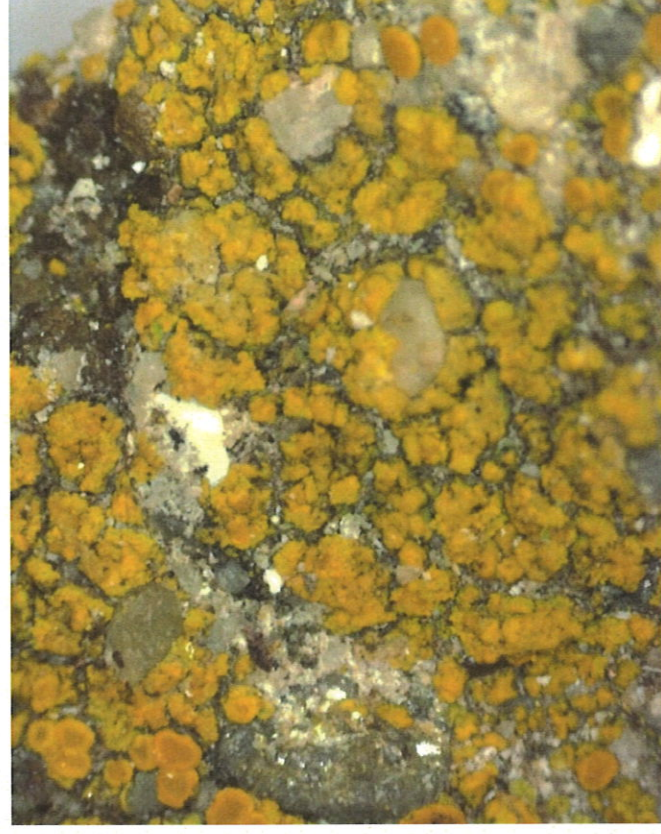


P27

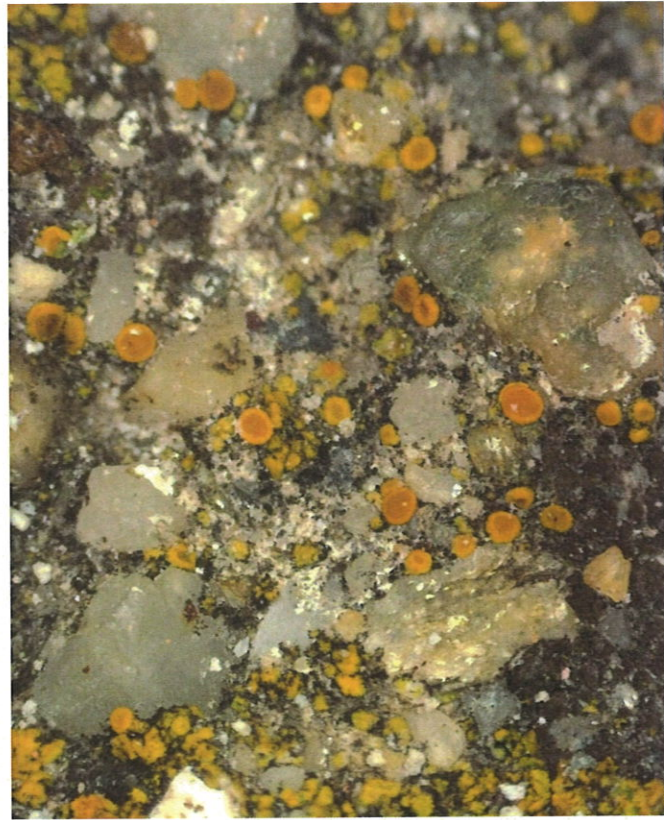
Proba mortar de interventie, prezenta unui atac biologic amplu pe intreaga suprafata



P28



P29

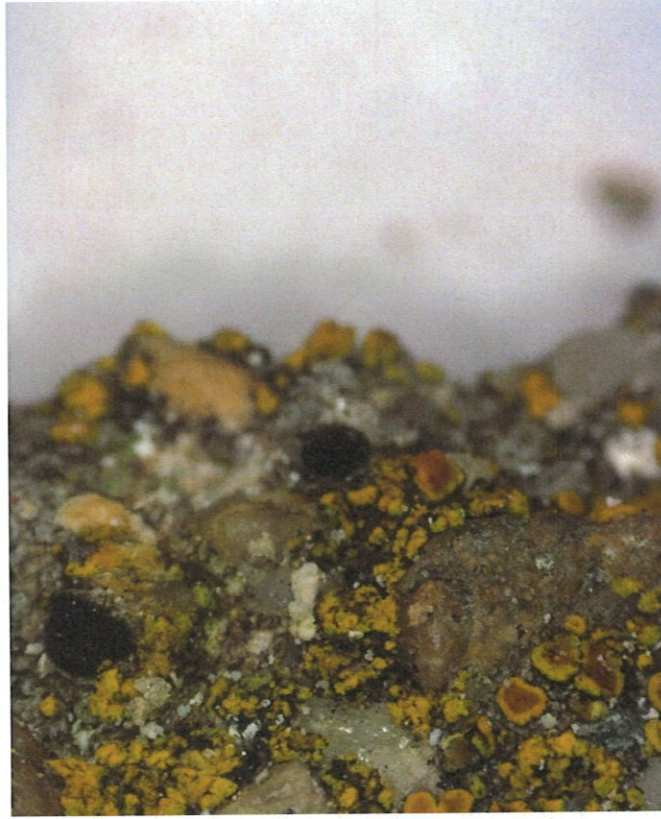


P30



P31

Proba analiza sedimente litice



P32



P33



P34

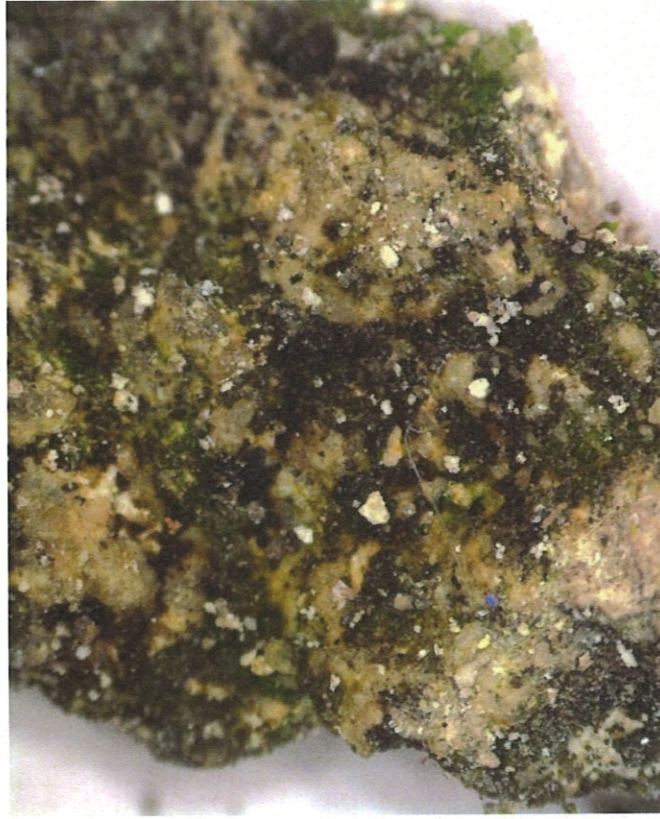


P35



P36

Proba analiza litică veche biodegradat în totalitate



P37



P38

Proba caramida



P39



P40



P41



P42



P43



P44



P46



P45